



# 95 COLUMBUS

Helping you work

**HEALTHY | SAFE | CONNECTED | SMART**

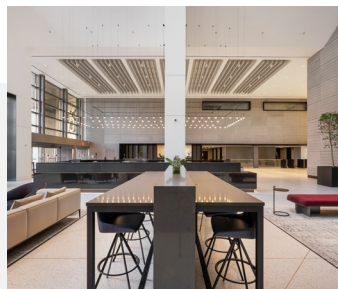
[www.95columbus.com](http://www.95columbus.com)

## WHAT MAKES 95 COLUMBUS A GREAT PLACE TO WORK?



### **Vibrant Grove Street**

Located in the heart of Jersey City, this well-connected office building is just steps from numerous retail, dining, cultural attractions, and multiple modes of convenient transit services.



### **Modern Workspace**

This modern, 20-story high-rise boasts an expansive lobby and multi-story atrium with amenities, flexible work environments, and direct access to Manhattan's Financial District.



### **Clean, Fresh Air**

Bipolar Ionization air purification technology installed throughout your office building to neutralize viruses, including all individual elevator cabs, gives you the assurance of healthy indoor air.

## CERTIFIED TO BE **AMONG THE BEST!**



Recognized for best-in-class green building infrastructure and design



Recognized for best-in-class green building infrastructure and design



Digital connectivity rating for infrastructure and connectivity

# ONSITE AMENITIES JUST FOR TENANTS AT 95 COLUMBUS

95 CHRISTOPHER COLUMBUS DRIVE | Jersey City, NJ 07302

For additional info and amenity access, visit [95columbus.com](http://95columbus.com) or contact your Property Management team.



## Unique **Arts & Culture** Hub

Immerse yourself in Jersey City's vibrant arts and culture scene, with over 21 square miles of art exhibits, performances, installations, murals and events nearby.

## Spectacular **Views & Access** to Manhattan

With direct access to New York City, enjoy the spectacular downtown Manhattan and Jersey City views from your workspace.

## Onsite **Parking & PATH** Access

Cycle or drive to work and park in the secure parking garage with direct building access. Or take the PATH train located just outside the main lobby.

## A Diverse **Culinary Experience**

From local hideaways to seasoned restaurateurs, the Grove Street area offers 40+ restaurants < 7 minutes from your office, plus a Krispy Kreme, Crumbl Cookies, Shake Shack, and Bistro La Source onsite!

## HERE TO **ENHANCE YOUR WORKDAY EXPERIENCE**

### Your Property Management Team

**Christian Leon**  
Property Manager  
[Christian.Leon@columbia.reit](mailto:Christian.Leon@columbia.reit)

**Gretchen Vigil**  
Assistant Property Manager  
[Gretchen.Vigil@columbia.reit](mailto:Gretchen.Vigil@columbia.reit)

### Your Building Owner / Manager

Columbia Property Trust is a national office provider operating responsibly for our tenant companies, investors, team members and communities across our portfolio in New York, San Francisco, Washington D.C., and Boston. We are proud to be a 2024 ENERGY STAR Partner of the Year for Sustained Excellence and a 2022 Platinum Level Green Lease Leader, as well as a Certified Great Place to Work® and one of the best companies to work for in New York City (*Fortune's NY, 2021, Crain's NY, 2022*).